



# Security

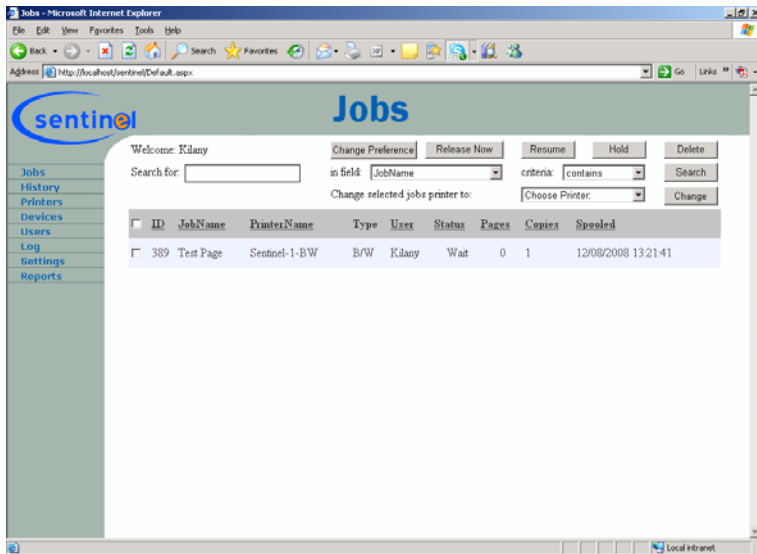
## Security

Printing is considered today to be one of the weakest links in the information security chain. Many companies have tens or hundreds of printers scattered in different locations in the organization, serving departments or areas within the company. A high percentage of printouts sent to these printers remain uncollected.

Some of these printouts may contain sensitive information that may cause damage to the organization if in the wrong hands. Competitors can learn about the future plans of the company, and about its customers. Employees can be exposed to sensitive information regarding other employees or management – and this is just the tip of the iceberg. The material that was printed and wasn't collected can also be accessible to the cleaning staff and guests visiting the place.



The Sentinel system is an innovative solution designed to give companies maximum control over their printing array. The system is designed for management, supervision and reducing the amount of print jobs.



## Economy

Printing is associated with high expense to the organization (paper, toner, and printer life span). Research shows that up to 20% of printouts sent to a shared central printer are either uncollected, or collected by a person other than the sender. Moreover, recent improvements in color printing, has resulted in a massively increased penetration of color laser printers into organizations, and along with that, has raised the usage of those printers by employees for personal needs. The costs of printing on these printers are obviously much higher than on monochrome printers.

## Management

The Sentinel system manages the entire print process. After a document is sent to a printer by a user, the Sentinel print server locks the document until the user identifies to the device located near the printer. The server then releases the printout to the printer. The system administrator receives a complete report of all printouts that were preformed in the organization, and can assign printing resources according to the needs of the organization.

## Main Features

1. Printing will only be possible after identification of the user by placing a card, typing a code or releasing the print job from a web interface.
2. Count and control the number of pages printed by each user, and optionally type a billing code in addition to the user name (For customers billing purposes).
3. Transfer a print job automatically from one printer to another (print to printer A and pass a card at the device near printer B will cause the print job to be automatically printer in printer B, next to the user).
4. Set a print quota for each user, and denies printing for users who used up their black/white or color quota.
5. Ability to define a printer that will be accessible to specific users only. And printers that are enabled to all users but of a specific user group.
6. Complete web interface, which gives the user control over the print jobs he submitted but not yet released, including the ability to cancel, delay and release print jobs.
7. Issue different reports, based on different intersections such as how many pages each user printed, how many pages were printed in a specific printer, etc...
8. Send on-line warnings and errors to the system administrator by email in cases certain events occur, such as an unlisted card was used.
9. Send personal messages to a user's web console, such as quota issues, warning of printing to an unauthorized printer etc...

